

SHOWDAILY™

The Daily News of PMTX & FACTEQ 2024

PUNE
MACHINE
TOOL EXPO™
2024

FACTEQ™
2024
Factory Equipment Expo

Special Pavilions



METROLOGY
EXPO

WELDEXPO
Exhibition for Welding, Cutting & Joining

Organiser



Indian Machine Tool
Manufacturers' Association

Delivered by IMTMA,
organiser of

IMTEX

25 - 28 MAY 2024, PUNE INTERNATIONAL EXHIBITION AND CONVENTION CENTRE, MOSHI, PUNE



PMTX 2024 - CURTAIN RAISER

Celebrating Manufacturing Excellence

Organized by Indian Machine Tool Manufacturers' Association (IMTMA), Pune Machine Tool Exhibition, a premier event for machine tools and manufacturing technology in western India, is making a successful return after a five-year hiatus. Scheduled for May 25-28, 2024, at Pune International Exhibition and Convention Centre in Moshi, Pune, this highly anticipated event showcases transformative solutions revolutionizing the manufacturing industry.



Source: Magic Wand Media

Pune Machine Tool Exhibition (PMTX), now in its third edition, is set to unveil the latest advancements in metal cutting, metal forming machinery, metrology, automation, robotics, quality control systems, consumables, accessories, software, material handling, and more. The event anticipates the participation of nearly 200 exhibitors, offering an exclusive glimpse into the technological innovations that are shaping the production of industrial goods across regional industries.

Highlighting the significance of the event, Jibak Dasgupta, Director General & CEO, IMTMA and Bengaluru International Exhibition Centre (BIEC), shares, "The exhibition space has increased by a record 100 percent with a total space of over 12,000 sq mt." "Every development in the metal cutting and metal forming industries is being showcased across the aisles," he adds underlining the exhibition's commitment to presenting industrial advancements.

Where innovations abound

The event has FACTEQ, a factory equipment expo, as a co-located show offering a spectrum of offerings, from energy-saving products and logistics equipment to maintenance and safety solutions. It promises visitors a holistic experience of a modern factory environment.

The show offers an additional avenue to be explored in concurrent shows – Metrology Expo, Weld Expo, and Digital Manufac-

turing. While Weld Expo is an exhibition for welding, cutting, and joining, Metrology Expo is an exclusive exhibition on metrology. Digital Manufacturing showcases evolving Industry 4.0 hardware, software and solutions, additive manufacturing, and other prominent technologies.

Industry stakeholders converge

Regardless of prevailing global challenges such as economic headwinds, inflationary pressures,

RAJENDRA RAJAMANE
President
IMTMA

Through the regional exhibitions, Indian Machine Tool Manufacturers' Association is trying to enable Medium and Small enterprises to participate and adopt the latest technologies to enhance their manufacturing capabilities.



JIBAK DASGUPTA
Director General & CEO
IMTMA and BIEC

Pune Machine Tool Expo 2024 (PMTX) is being organized in a new exhibition venue with Factory Equipment Expo (FACTEQ) as a co-located show. These events will give visitors a glimpse into the technological future for mass-produced industrial goods that regional industries can bank on.



and geopolitical uncertainties, India's investment climate maintains a promising outlook. He highlights the resilience of the country's Manufacturing sector and anticipates a continued positive trajectory supported by product-linked incentive (PLI) schemes catered to industries.

As the favorable economic climate encourages the development of new industries, the expo is expected to draw in a massive visitor footfall of industry stakeholders eager to explore various avenues. Dasgupta elaborates, "The expo has elicited a warm response from a large proportion of regional industries across sectors like Aerospace, Auto Components, Automobiles, Capital Goods, Defence, Electrical, and Electronics industries, among others." This medley of industries creates a dynamic atmosphere brimming with networking and business venture opportunities for the anticipated presence of more than 100 trade delegation companies and an estimated 15,000 visitors.

This medley of industries creates a dynamic atmosphere brimming with networking and business venture opportunities for the anticipated presence of more than 100 trade delegation companies and an estimated 15,000 visitors.

further outlines the proactive strategies to augment visitor participation, "We are also actively engaging with industry stakeholders through various online and offline platforms, which is creating a buzz for the event."

Focus on MSMEs

The co-located shows will set the standard while emphasizing the importance of regional shows in facilitating industry growth. Rajendra Rajamane, President, IMTMA, explains, "Regional machine tool expos have created great synergy by bringing manufacturing technologies to the doorsteps of user industries in various locations."

By organizing regional exhibitions, IMTMA is focusing its efforts on empowering Micro, Small, and Medium Enterprises (MSMEs) to participate. This initiative encourages them to adopt the latest technological innovations to enhance their manufacturing capabilities, thus providing companies with increased efficiency and a competitive edge.

As part of this initiative, the association hosts exhibitions in key hubs like Delhi and Pune, renowned for their significant presence in machine tools and various manufacturing sectors. "IMTMA seeks government assistance through various schemes and supports MSMEs' participation in

expos which benefits them," Rajamane adds.

By advocating for MSME participation, the association increases industry representation and creates a collaborative environment conducive to knowledge exchange and business growth.

These efforts translate into connecting MSMEs with diverse industry stakeholders as part of trade delegations at its exhibitions to facilitate strategic networking and create mutually beneficial opportunities for exhibitors and visitors alike.

More regional shows ahead

In concerted efforts to establish the importance of regional shows, the association is preparing for an expanded roster of regional shows aimed at fostering industry connectivity and technological innovation.

Rajamane lists events that will revolutionize the industry, "MTX Connect, a smart and short expo on machine tools will be held in October, later this year, at Rudrapur and the next edition of Delhi Machine Tool Expo (DMTX) along with the Factory Equipment expo (FACTEQ) in May 2025 in Delhi." **SD**



HIGH SPEED AND VERSATILE MACHINING CENTERS

J SERIES



Direct drive spindle speed upto 12,000 rpm | Spindle power upto 22 kW

Spindle taper BT 40 (BBT 40), BT 50 (BBT 50) (opt).

24 Tool ARM type ATC | Tool change time 1.9 sec | Precision linear guideways on X, Y & Z axes

Rotary Automatic Pallet Changer available in selected models | TPM Friendly Design

Stroke (in mm)

X axis – 600mm – 1050mm | Y axis – 500mm – 600mm

Z axis – 500mm – 600mm

Table Size (in mm)

L – 900mm (min) to 1200mm (max) x

B – 500mm (min) to 600mm (max)



For Enquiry
VISIT US @
HALL 1
STALL B-107



www.lmwcnc.com

FOLLOW US ON:



LMW CNC



WHERE YOU ARE IS AS IMPORTANT AS WHO YOU ARE

The Official Magazine of
imt
Indian Machine Tool Manufacturers' Association

In Association with
Modern Machine Shop



For Advertisement reach out to **MURALI SUNDARAM** | E: murali.sundaram@magicwandmedia.in | M: +91 9740048390

Source: Lakshmi Machine Works Ltd



Lakshmi Machine Works Ltd
www.lmwcnc.com
Hall & Stall: B-107

HORIZONTAL TURNING CENTERS

LMW's S Turn I

STurn I, a next-generation turning center, comes with an 8-inch chuck, a maximum diameter of 320 mm, and a maximum length of 300 mm. It has an 8-station hydraulic turret, a spindle speed of 4,500 rpm, and a spindle power of 5.5/7.5 kW. This makes the machine suitable for a wide range of applications, from high-volume production runs to precision machining. S Turn I is an excellent choice for high-quality reliable turning capabilities and caters to industries, including Automobile, Fittings, Pumps & Valves, Oil & Gas, Foundry & Forging, General Engineering, etc.

FACTEQ 2024 CURTAIN RAISER

For Factories of the Future

One-of-a-kind factory equipment expo FACTEQ 2024 has been organized by Indian Machine Tool Manufacturers' Association (IMTMA) with the view to demonstrate future-perfect factories equipped with the latest technological advancements. The event is co-located with Pune Machine Tool Expo (PMTX) 2024, from May 25-28, 2024, at Pune International Exhibition and Convention Centre, in Moshi, Pune.

With enhancing productivity and efficiency as the key goal, this future-forward expo witnesses several industry leaders gathering to explore the latest advancements poised to transform the industry. The event focuses on supporting the factories of tomorrow in construction, maintenance, and modernization plans by showcasing an array of solutions for improving technology and factory environments.

Toward a Sustainable Future

The necessity of integrating advanced technology to boost plant and factory efficiency is the event's overarching vision. It emphasizes the use of cutting-edge technology to achieve energy efficiency and encourage localized manufacturing processes. This, in turn, will reduce the reliance on imports and promote domestic machine tools and factory equipment, while ensuring a sustainable future.

Raising Operational Standards

Exhibitors are showcasing a variety of products and services to raise operational standards, commission higher-efficiency factories, and promote sustainability within the Manufacturing sector. To this end, Jibak Dasgupta, Director General & CEO, IMTMA and Bengaluru International Exhibition Centre (BIEC), highlights, "Energy-saving products, logistics equipment, maintenance products, safety products, and various other solutions for factories are being showcased in this co-located event." Also displayed at the event are air and water systems, security solutions, sustainable technologies, factory furniture, electrical lighting solutions, information systems, and hardware.

Increased Investments in Varied Sectors

As the country's Manufacturing industry targets a US\$ 1 trillion contribution to the economy by 2030, the growth will boost the demand for new factories and upgrades to existing facilities.

DRILL TAP CENTERS

Compact GV 40 for Enhanced Productivity

High-performance Drill Tap Center (DTC) with a small footprint is always a challenge. The solution has emerged as AMS GV 40, a high-performance and high-production Drill Tap Center. It is a compact gantry-type machine, with a high-speed, high-torque BBT-30 spindle or Direct Drive HSK A 50 spindle with 20,000 rpm as an option. The machine features a Turn Table interface with 5 sec changing time, AI servo tuning, feed-forward function, and smart spindle load control to ensure high productivity and machining accuracies. The GV40 features a table size of 760 mm x 400 mm, with a load-carrying capacity of 400 kg. Its strokes measure at 500 mm and 400 mm. It features rapid rates of 50 m/min for each axis. Additionally, it boasts a higher spindle power, with 18.5 kW, 15 kW, and 11 kW. Its other features include a compact design (1,280 mm in width x 3,400 mm in depth); a fully enclosed 26-tool

servo-driven ATC; a coolant thru spindle; and a looping system with 4 lines per pallet. The machine is ideally suited for a wide array of component machining applications in the Automotive, Aerospace, and General Engineering industries.

Why AMS?

AMS is the largest manufacturer of machining centers in India. The company offers a comprehensive range of products for machining components on a Drill Tap Center. From Spark to GV40 and DTC-400XL to TCV-540, it provides solutions for machining varied sizes of components. At PMTX 2024, the company is displaying its all-new GV 40 DTC that promises high performance and high production for a wide array of component machining applications. The focus is on maximizing the machining process, increasing flexibility, achieving smooth workflow and various types of automation.

Ace Designers Ltd – Machining Centre Division
www.acemicromatic.net
Hall & Stall: 1/C-109

Source: Ace Designers Ltd – Machining Centre Division



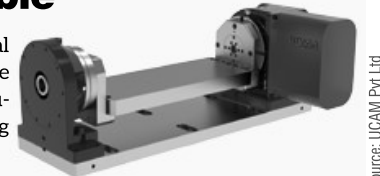
PRODUCT SHOWCASE

UCAM to Unveil High Speed 4-axis Rotary Table

UCAM's URQ-200HS 4-axis Rotary table is a versatile solution for high-speed machining accommodating various production needs. The modular structure and compact design make it an ideal choice for space-constrained environments that demand high speed machining. The URQ-200HS provides higher speed and clamping

torque. This series is especially ideal for drill tap centers as they require high-speed indexing, making it a valuable asset for precision machining with increased productivity.

UCAM Pvt Ltd
www.ucamind.com
Hall & Stall: H-107



Source: UCAM Pvt Ltd



IMTEX 2025

International Machine Tool & Manufacturing Technology Exhibition

Concurrent shows



23 - 29 January 2025, Bengaluru

Largest Machine Tool and Manufacturing Technology Show in South and South-East Asia



Venue



www.imtex.in



Industrial Fluid Solutions for the Road Ahead

Take your vision for e-Mobility further and build the future of transportation with the industry leaders in process fluids. Partnering with Quaker Houghton means access to unmatched expertise, cutting-edge technology and a comprehensive portfolio to help you forge the way ahead. Let's move forward, together.

Wish to know more?

Visit us at **Booth H104, Hall 1**

Let the Future of e-Mobility Follow You.

QHeMobility.com

©2024 Quaker Houghton. All rights reserved.



PMTX 2024 Exhibitors List



COMPANY NAME	HALL	STALL
ABEXMATIC HYDRAULICS PVT LTD	1	M115
ABHI FINE PRODUCTS	1	A109
ABSOLENT FILTERMIST INDIA PVT. LTD	1	A112
ACCURATE GAUGING AND INSTRUMENTS PVT LTD	1	E105
ACE MICROMATIC GROUP	1	C109
ACE ROBOTICS PVT. LTD	1	J106
ADEPT PROSIGN PVT. LTD	1	C115
AGILE MACHINERIES PVT. LTD	1	M109
AIR PEL TECHNIC	1	C103
ALEX MACHINE TOOLS PVT. LTD	1	M106
ALL CUT SALES	1	N110
APM TECHNOLOGIES	1	M101
APPLIED TECHNOSYSTEMS	1	P101
ASCEND FLUID TOOLS PVT. LTD / DOSATRON	1	N106
ASSOCIATED TECHNOCRATS PVT. LTD	1	G109
ATQ METRO PVT. LTD	1	B113
AXIS ENGINEERING SOLUTIONS	1	E104
BATLIBOI LTD	1	D104
BESTOMECH INDUSTRIES	1	N101A
BHANSALI ISPAT	1	J109
BHAVYA MACHINE TOOLS LLP	1	H103
BIGZERO TECHNOLOGY LLP	1	P106
BRISK INDUSTRIES PVT. LTD	1	G106
CARL BECHEM LUBRICANTS (INDIA) PVT. LTD	1	D108A
CARL ZEISS INDIA (BANGALORE) PVT. LTD	1	B109
CASTROL INDIA	1	M110
DAKSH QUALITY SYSTEMS	1	E101
DARSHANA INDUSTRIES PVT LTD	1	B106B
DYNEMECH SYSTEMS PVT. LTD	1	B104
EASTMAN CONVEYOR SOLUTIONS	1	P103
EFFEE INDUCTION PVT. LTD	1	E108
ELECTRONICA MECHATRONIC SYSTEMS (I) PVT LTD	1	L102
ELECTROPNEUMATICS & HYDRAULICS (I) PVT. LTD	1	H108
ELESA AND GANTER INDIA PVT. LTD	1	A105
ETA TECHNOLOGY	1	B110
EXEMPLAR MACHINE TOOLS	1	M112
EXXON MOBIL	1	M108
FALCON TOOLINGS	1	A104
FENWICK AND RAVI	1	J108
FLEDON - MH & MORE	1	D109
FLEXSPEED TECHNOLOGY INDIA PVT. LTD	1	L106
FLURO ENGINEERING PVT LTD	1	D105
GEO INFORMATICS CONSULTANTS PVT. LTD	1	B105A
GH INDUCTION INDIA PVT. LTD	1	B103
GISHNU GEARS	1	K109
GLOBAL CNC PVT. LTD	1	A103
GREY MATTER ROBOTICS PVT. LTD	1	A110
GRIND MASTER MACHINES PVT. LTD	1	J104
GRIND TECH SYSTEMS	1	K106
GURUKRUPA BELLOWES	1	L107
HALTEN TOOLS INDIA PVT. LTD	1	D107
HI-LIFE MACHINE TOOLS LTD	1	G101
HOSABETTU HEAVY MACHINERY LLP	1	M104
HP SPINDLES PVT. LTD	1	L112

COMPANY NAME	HALL	STALL
HTMT PVT LTD	1	H106
HYTEK MARKETING	1	J102
ICONMOV TECHNOLOGIES PVT. LTD	1	N107
IMI MACHINE TOOLS PVT. LTD	1	B111
INCREDIBLE MACHINES	1	B101
INDIA INTERNATIONAL MARKETING COMPANY	1	C110
INDO NIHON TECHNOLOGIES	1	J103
INDO SERVICES	1	J110
INFINITY TOOLING	1	L101
INNOVATIVE AUTOMATION PRODUCTS	1	K108
J K MACHINES	1	A107
JET MACHINES / TOOL - TECH ENGINEER'S	1	P107
JYOTI CNC AUTOMATION LTD	1	G107
KANCHAN HYDRAULICS PVT. LTD	1	L105
KENNAMETAL INDIA LTD (WIDMA)	1	C107
KEYENCE INDIA PVT LTD	1	A106
KHARE ENGINEERING & TOOLS PVT. LTD	1	M111
KITAGAWA INDIA	1	C104
KLAUS MACHINE TOOLS & PRECISION COMPONENTS PVT. LTD	1	M107
KTM TECHNOLOGY & INNOVATIONS (INDIA) PVT. LTD	1	A103A
KUVAM TECHNOLOGIES PVT LTD	1	J107
LAKSHMI MACHINE WORKS LTD	1	B107
LEANWORX TECHNOLOGIES PVT LTD	1	E103
MACPOWER CNC MACHINES LTD	1	C106
MAHABAL METALS PVT. LTD	1	A101
MAHEEN ENTERPRISES	1	K102
MANLEO DESIGNS	1	C106A
MAPAL INDIA PVT. LTD	1	L108
MARKINDIA MARKING SYSTEMS	1	E102
MEC TECHNOLOGY MACHINES (I) PVT. LTD	1	J103A
MECHMATRIX	1	L104
MEERA LASER SOLUTIONS PVT. LTD	1	J105A
MEHTA CAD CAM SYSTEMS PVT. LTD	1	H102
MEHTA TOOLS / S.R. MEHTA & SONS	1	K106A
METATECH INDUSTRIES	1	M102
MITUTOYO SOUTH ASIA PVT LTD	1	A108
MIVEN MAYFRAN CONVEYORS	1	M114
MTB FILTER INDUSTRIES	1	L111
Muratec /MEIBAN ENGINEERING TECHNOLOGIES PVT. LTD	1	E106
NAGEL SPECIAL MACHINES PVT. LTD	1	G105
NATIONAL PNEUMATIC SYSTEMS	1	L113
NISHA ENGINEERING WORKS	1	H112
NSA ENGINEERING SOLUTIONS	1	D108
OILMAX SYSTEMS PVT. LTD	1	P109
ONYX TOOLINGS LTD	1	K110
ORBITAL AUTOMATION PVT. LTD	1	P105
ORBITAL MEKATRONIK SYSTEMS PVT LTD	1	D106
OTTO BILZ (INDIA) PVT LTD	1	B106A
PARMAR CNC MACHINES INDIA LLP	1	D112
PATANKAR INDUSTRIES	1	C105
PMT MACHINES LTD	1	B108

COMPANY NAME	HALL	STALL
PNEUMEC KONTROLLS	1	M103
PRAKASH ENGITECH PVT. LTD	1	K107
PRESCIENT TECHNOLOGIES	1	P102
PRISM SURFACE COATINGS PVT. LTD	1	B102
PROCAL SOLUTION / RENISHAW METROLOGY	1	J105
QUAKER HOUGHTON	1	H104
QVI INDIA PVT. LTD	1	A102
RAISE MACHINE TOOLS	1	G111
RAJAMANE INDUSTRIES PVT. LTD	1	G102
RAMM PRECISION PRODUCTS PVT. LTD	1	C111
RELIANCE CALIBRATION LABORATORY	1	M113
ROCKPECKER PVT. LTD (ECOTILE)	1	D111
S & T ENGINEERS PVT. LTD	1	K103
SAI ENTERPRISES (VOLSET)	1	L109A
SAI TRUMAN ENTERPRISES	1	G108
SANLEE RIVETING SOLUTIONS	1	H113
SBER BANK	1	K105A
SETCO SPINDLES INDIA PVT. LTD	1	M116
sfHawk	1	B107A
SGO TECHNOLOGIES LLP	1	J101
SHARDA MECHANIC WORKS PVT. LTD	1	C112
SHREE RAPID TECHNOLOGIES	1	M105
SHRI BALAJI ENGINEERING WORKS	1	G110
SINGHAL POWER PRESSES PVT. LTD	1	C108
SMT INNOVATIVE	1	L105A
SMW AUTOBLOK WORK HOLDING PVT. LTD	1	E109
SPAN FILTRATION SYSTEMS PVT. LTD	1	B112
SPECTRA-TECH	1	K101
SRIYANTRA ENGINEERS PRIVATE LIMITED	1	D110
SUAVE ENGINEERING	1	E113

COMPANY NAME	HALL	STALL
SUNITA ENGINEERING CORPORATION	1	N105
SUPER SALES INDIA	1	C101
SUPER SONIC INDUSTRY PVT. LTD	1	N102A
SUPERSLIDES & BALLSCREWS CO. INDIA PVT. LTD.	1	K105
SURFACE FINISHING EQUIPMENT CO.	1	H101
SWIFTIN AGENCIES LLP	1	N104
SWIFTIN CORPORATION LLP	1	N102
SYNOPSIS INDIA	1	P108
T.M ENGINEERING EQUIPMENTS	1	N101
TECHEXPERT ENGINEERING PVT. LTD	1	P104
TOOL ROOM ENGINEERS LLP	1	D104A
TSUGAMI PRECISION ENGINEERING INDIA PVT LTD	1	G104
UCAM Pvt. Ltd.	1	H107
UNIQUE SAWS & MACHINERY PVT LTD	1	D101
VAC PNEUMATIC	1	A111
VARAD AUTOMATION & ROBOTICS	1	N108
WEFIRE	1	B105
WOLFMET SOLUTIONS PVT. LTD	1	P101A
WTO WERKZEUG-EINRICHTUNGEN GMBH	1	K104
YAMAZAKI MAZAK INDIA PVT. LTD	1	B106
YAMAZEN MACHINERY & TOOLS INDIA PVT. LTD	1	L109
YANTRA DESIGN	1	N109
YESKOLUBE INDIA PVT. LTD	1	N103
ZAVENIR DAUBERT INDIA PVT. LTD	1	E107
ZEAL TECH AUTOMATION	1	G103

FACTEQ 2024 Exhibitors List

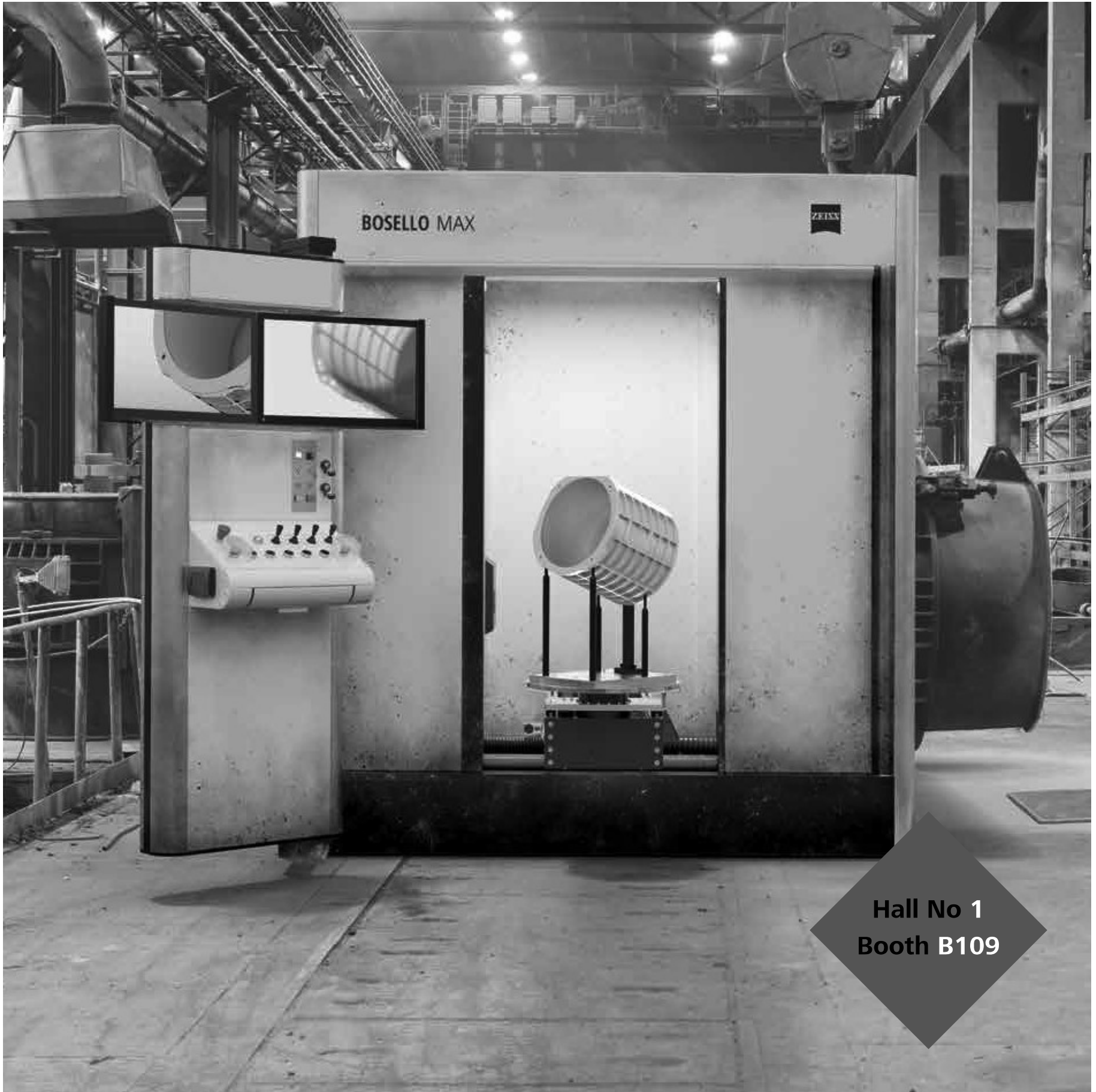


COMPANY NAME	HALL	STALL
AAR-EM ELECTRONICS PVT. LTD	2	F-C108
ASHTECH 3D INNOVATIONS	2	F-B120
AVIANS INNOVATIONS TECHNOLOGY PVT. LTD	2	F-A102
CAD CAM GALAXY	2	F-C117
DYNOTECH INSTRUMENTS PVT. LTD	2	F-C128
ELECTRONICA FINANCE LIMITED	2	F-B119
EMH CRANE COMPONENTS PVT. LTD	2	F-B102
ENDO KOGYO INDIA PVT. LTD	2	F-C113
HYPERREALITY TECHNOLOGIES PVT. LTD	2	F-B106A
I-KONEEC MOTION SOLUTIONS	2	F-C129
IMTMA	2	F-B116A
INDUSTRIAL PRODUCTS FINDER (IPF)	2	F-C105
INNOVATIVE FINDS	2	F-C109
KABELSCHLEPP INDIA PVT. LTD	2	F-C101
MAC PRINTING SOLUTIONS	2	F-A101
METAFOLD ENGINEERING PVT LTD	2	F-B108
MODERN MANUFACTURING INDIA	2	F-B107
MOONS INTELLIGENT MOTION SYSTEM INDIA PVT. LTD	2	F-B112

COMPANY NAME	HALL	STALL
NANDINI ENTERPRISES	2	F-B104
NB EQUIPMENTS & ENGINEERING PVT. LTD	2	F-A107
OEM UPDATE	2	F-C115
OOB CONSULTING LLP	2	F-B113
POLYMAK TOOLS INDIA PVT. LTD	2	F-C112
RAJ COOLING SYSTEMS PVT. LTD	2	F-B118
SCUTES INDIA PVT. LTD	2	F-C103
SIVENARA ENGINEERS	2	F-B103
SM LASER TECHNOLOGY	2	F-C130
SWID PROCESS TECHNOLOGIES PVT. LTD	2	F-C131
THE NEW BALL BEARING CO. LLP	2	F-A103
TURBO INDIA INTERCONNECT SOLUTIONS LLP	2	F-C104
WIPRO PARI PVT. LTD	2	F-C102
XTREME COOLERS PVT. LTD	2	F-A113
YOUNGMAN MANUFACTURING INDIA PVT. LTD	2	F-B101
YUKEN INDIA LTD	2	F-A106
ZONAP ENGINEERING SOLUTIONS PVT. LTD	2	F-B106

Almost Indestructible.

ZEISS BOSELLO 2D X-ray Solutions



Hall No 1
Booth B109

To Know more

Contact: +9180 43438222 | info.metrology.in@zeiss.com



Seeing beyond